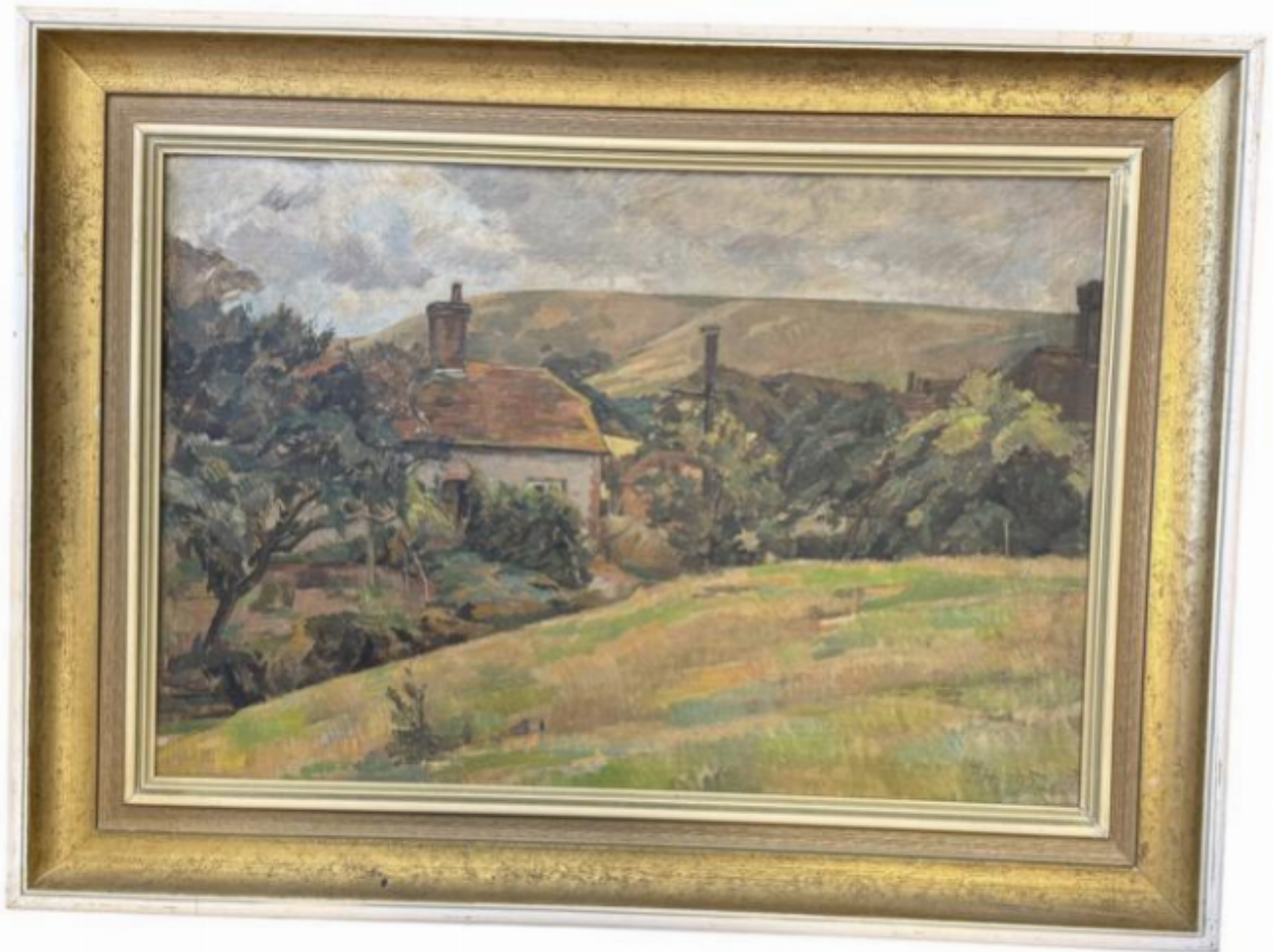


**Emmett & White**  
ANTIQUES & INTERIORS

Percy Horton MA RBA ARCA (1897-1970) Oil on canvas Dower House, Firle

£495



REF: 6746

Height: 38 cm (15")

Width: 55 cm (21.7")

Framed Height: 51 cm (20.1")

Framed Width: 69 cm (27.2")

## Description

Percy Horton MA RBA ARCA (1897-1970) , Framed oil on canvas laid on board country scene of the Dower House, Firle, home to his friend and neighbour. Initialled lower right and dated 1952

Complete with a 1971 catalogue form the Mall Galleries London where exhibited and purchased under item 47 for £160 in 1971 by his friend and neighbour Philip Bottomley.

Percy Horton (1897-1970) was a British painter and art teacher known for his portraits, landscapes, and social realist works. Born in Brighton, he studied at the Royal College of Art and later taught at the Ruskin School of Drawing and Fine Art in Oxford. His portraits, including those of prominent figures such as E.M. Forster and Sir Arthur Tansley, are recognised for their depth and character.

Influenced by his socialist beliefs, Horton's work often depicted working-class subjects with empathy. His artistic legacy endures through his contributions to British art education and his evocative, human-centred approach to portraiture.