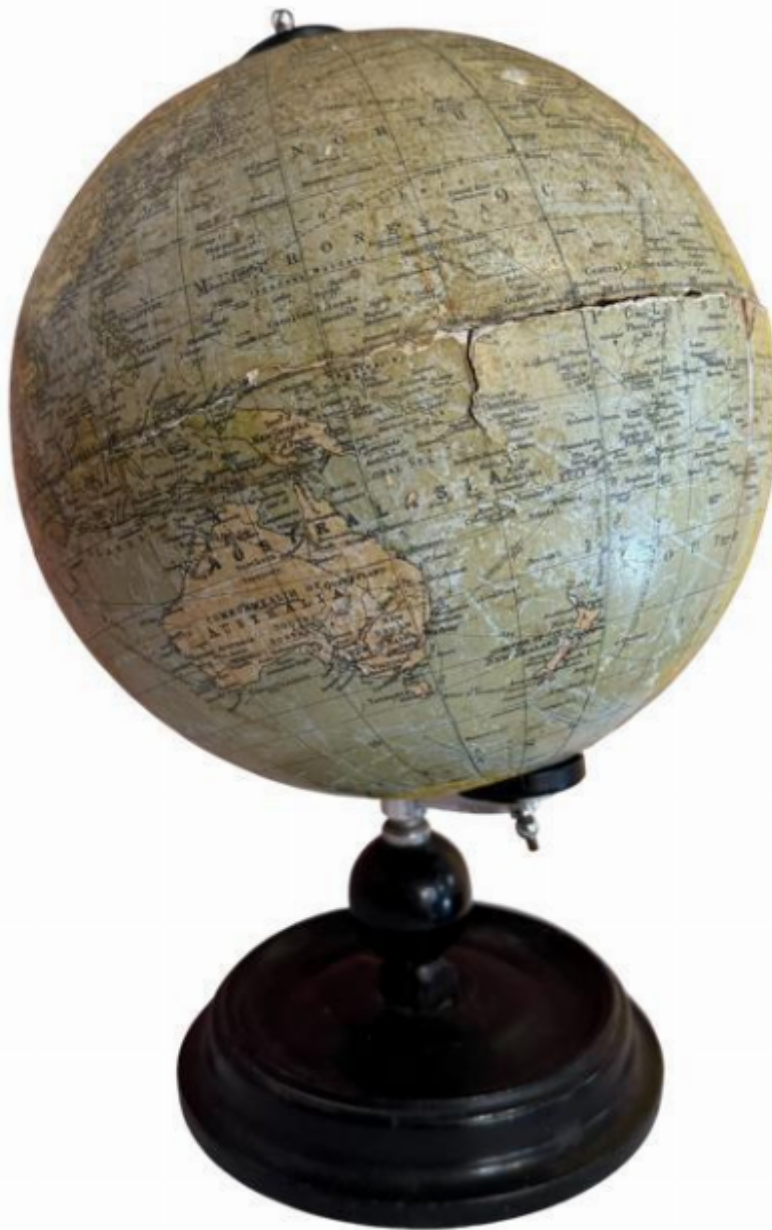


Emmett & White  
ANTIQUES & INTERIORS

1930s Philips 8 inch British Empire papier-mâché globe

£145



## Description

A 1930s Philips 8 inch British Empire papier-mâché globe rotating on an ebonised wooden stand. It's clearly been well used as the cracking around the equator shows.

Philip's globes have a rich history dating back to the 19th century, produced by George Philip & Son, a notable British publishing company established in 1834. Initially, they focused on educational maps and atlases, later expanding into globes.

Known for their meticulous detail and accuracy, these globes became a staple in educational institutions. The company utilised advancements in cartography and printing to create high-quality globes, reflecting the latest geographical knowledge. Today, they remain respected educational tools worldwide.