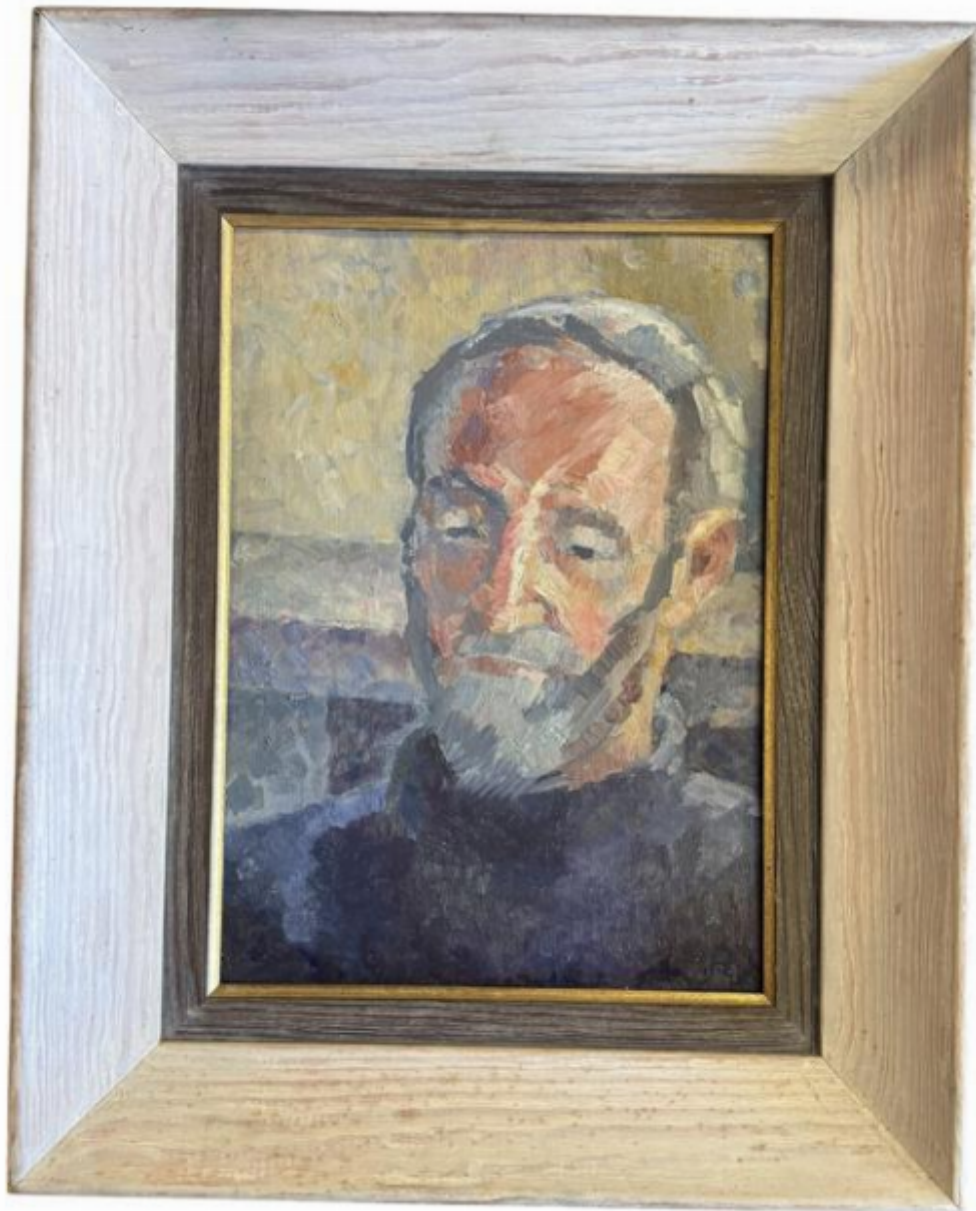


Emmett & White  
ANTIQUES & INTERIORS

Jasmine Rose-Innes oil on canvas

Sold



REF: 7054

Height: 30 cm (11.8")

Width: 23 cm (9.1")

Framed Height: 45 cm (17.7")

Framed Width: 36 cm (14.2")

## Description

Jasmine Rose-Innes oil on canvas portrait of Philip Bottomley, 1987.

Philip Bottomley was an architect turned artist, neighbour of Quentin Bell and close friend of Peggy Angus.

Jasmine Rose-Innes was a British-born artist, designer, and writer, renowned for her multifaceted creative contributions. Born Iona Jasmine Gordon-Forbes in Winscombe, Somerset, on November 26, 1915, she married Reginald Rose-Innes in 1947. Her acclaimed autobiography, 'Writing in the Dust' (1968), offers a poignant account of early life in Rhodesia and earned her the Heinemann Award.

Beyond writing, she was a painter, photographer, and teacher, deeply involved in the arts community. Jasmine passed away on June 15, 1998, in Beddingham, Sussex, leaving a legacy of artistic and literary achievement.